

微纳加工智能装备 解决方案

Intelligent Laser Equipment Solutions
for Micro & Nano Processing

济南金威刻激光科技股份有限公司

总部地址：济南市高新区新泺大街大数据产业基地 D 栋 13A

光纤研发生产基地：山东济南市高新区春田路 58 号

钣金配套生产基地：山东济南市高新区温泉路 6158 号

智能综合生产基地：山东济南市高新区科嘉路 2999 号

电话：+86-531-88020976

Http://www.wklaser.cn www.sdgwk.com

E-mail:market@wklaser.com

济南金威刻深圳分公司

地址：广东省深圳市宝安区福海街道大洋路 90 号中

粮（福安）机器人科技园 11 栋 1 楼

GWEIKE TECH CO., LTD

Headquarters:13A, Building D, Big Data Industrial Base, Xinluo Avenue,
High-Tech Zone, Jinan, Shandong, China

Fiber Laser R&D and Production Base:

No. 58 Chuntian Road, High-Tech Zone, Jinan, Shandong, China

Metal Component Fabrication Base:

No. 6158 Wenquan Road, High-Tech Zone, Jinan, Shandong, China

Integrated Intelligent Automation Manufacturing Base:

No. 2999 Keji Road, High-Tech Zone, Jinan, Shandong, China

TEL: +86-531-88020976

Http://www.gwklaser.com

E-mail:wkcuff@163.com

Shenzhen Branch of GWEIKE TECH CO., LTD.

Address:1st Floor, Building 11, COFCO (Fu'an) Robotics Science & Technology Park,

No. 90 Dayang Road, Fuhai Street, Bao'an District,

Shenzhen, Guangdong, China

免责声明：本画册中所包含的产品相关参数均为标准参考数据，所有产品图片外观仅供参考，产品会根据
我司工艺升级随之改变，产品相关信息以销售工程师告知为准。最终解释权和版权归金威刻激光所有，翻印必究。



微信公众号

400 8061 521

全国服务热线

▶ 以智为擎 · 以质为基

赋能智造加速 >>>

Powered by Intelligence · Built on Quality

Enabling intelligent manufacturing acceleration

G·WEIKE
金威刻激光

企业愿景

Enterprise Vision

金威刻智造 让世界骄傲

GWEIKE Intelligent Manufacturing — Making the World Proud

核心价值观

Core Values

以客户为中心、质量至上、创新发展、真诚待人、团结合作、立即行动

Customer-centric approach · Quality first · Continuous innovation · Integrity and sincerity · Team collaboration · Action-oriented execution

使命

Mission

激光技术改变生活

Laser technology for a better life

ABOUT GWEIKE

直击金威刻



始创于
2004年

Founded in 2004

金威刻激光是一家集研发、生产、销售、服务为一体的高新技术企业，始终致力于引领激光装备的革新升级，为全球客户提供优质的全场景化激光智能解决方案。公司拥有高规格的钣金生产能力、科学高效的装配产线、全面系统的服务网络，产品远销全球 180 多个国家和地区。

Gweike Laser is a high-tech enterprise integrating research and development, manufacturing, sales, and after-sales service. The company is dedicated to driving innovation in laser equipment and delivering high-quality, application-oriented intelligent laser solutions to customers worldwide. Gweike Laser operates high-standard sheet metal fabrication facilities, efficient and precision-oriented assembly lines, and a comprehensive global service network. Its products are supplied to customers in more than 180 countries and regions worldwide.



光纤研发生产基地
Fiber R&D and production base



智能化综合生产基地
Intelligent comprehensive production base



广东生产基地
Guangdong production base



配套装备生产基地
Supporting equipment production base

构建生产总面积
200000+ m²

Over 200,000 m²
of Manufacturing Facilities

年生产能力
20000+ 台

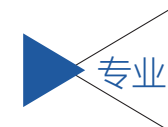
Annual Production Capacity:
20,000+ Units

全球累计销量
100000+ 台

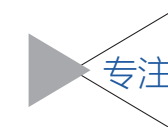
Global Cumulative Shipments:
100,000+ Units

以研发为根本、以创新为驱动，金威刻激光持续加大研发投入、引进专业人才，打造出了一支专业技术硬、综合素养强的研发团队，铸就了每年五种以上新产品的开发能力。同时在全球建立了多个自有研发中心，持续在高功率切割、柔性自动化、三维五轴技术、新能源动力电池、超精密切割等核心领域进行技术攻坚和产品释义，技术创新能力始终处于行业前沿。

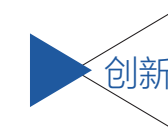
Driven by research and development and powered by continuous innovation, Gweike Laser continues to increase investment in R&D and attract top technical talent, building a highly skilled and multidisciplinary R&D team. This capability enables the company to launch more than five new products every year. In parallel, Gweike Laser has established multiple proprietary R&D centers worldwide and continues to achieve technological breakthroughs in key fields such as high-power laser cutting, flexible automation, five-axis laser processing, new energy battery manufacturing, and ultra-precision laser machining. Its technological innovation capabilities consistently remain at the forefront of the industry.



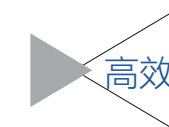
Professionalism



Focus



Innovation



Efficiency

TEAM OVERVIEW 团队介绍

奋斗型员工
1200+

Dedicated Employees: 1,200+

专业研发人员
200+

Professional R&D Engineers: 200+

售后工程师
300+

After-Sales Service Engineers: 300+

满载荣光 硕果累累

Honors & Achievements

国家级专精特新“小巨人”企业
National-Level "Specialized, Refined, Distinctive and Innovative" Small Giant Enterprise

国家高新技术企业
National High-Tech Enterprise

中国外观设计优秀奖
China Industrial Design Excellence Award

中国好技术
National "China Good Technology" Award

山东省瞪羚企业
Shandong Province Gazelle Enterprise

山东省第一批“好品山东”品牌企业
The first batch of "Good Quality Shandong" brand enterprises in Shandong Province

山东省制造业单项冠军企业
Shandong Province Manufacturing Industry Single Champion Enterprise

山东省技术创新示范企业
Shandong Province Technology Innovation Demonstration Enterprise

山东省制造业高端品牌培育企业
Shandong Province High-End Manufacturing Brand Cultivation Enterprise

山东省著名商标
Shandong Province Famous Trademark

CERTIFICATE OF HONOR

荣誉证书

经过多年的行业积累和沉淀，金威刻激光不断在研发上深耕细作，通过欧盟 CE 认证、美国 FDA 和 ISO9001 多项认证，获得产品和技术授权专利 160 多项。荣获美国 MUSE 设计奖铂金奖、国家级专精特新“小巨人”企业、国家高新技术企业、中国外观专利优秀奖、中国好技术、山东省瞪羚企业、山东省第一批“好品山东”品牌企业等多项殊荣，2022 年山东省高端品牌及品牌价值评定 31.21 亿。

After years of industry experience and sustained technological development, GWEIKE Laser remains committed to R&D and continuous innovation. The company holds 160+ granted patents covering products and core technologies, and has achieved key international certifications and compliance milestones, including CE certification, compliance with applicable U.S. FDA requirements, and ISO 9001 quality management system certification. GWEIKE Laser has received numerous national and provincial honors, including the National-level SRDI "Little Giant" enterprise designation, National High-Tech Enterprise, the China Industrial Design Excellence Award, the China Good Technology Award, recognition as a Shandong "Gazelle" Enterprise, and designation among the first batch of "Good Products of Shandong" brand enterprises. In 2022, GWEIKE Laser was officially recognized as a Shandong High-End Brand, with an evaluated brand value of RMB 3.121 billion.



COMPANY OVERVIEW
企业概况



SCALE/STRENGTH
企业规模 / 实力

- 1 金威刻生产研发基地
GWEIKE Production & R&D Base
- 2 生产基地展厅
Production Base Exhibition Hall
- 3 研发实验室
R&D laboratory
- 4 精密设备展厅
Precision Equipment Exhibition Hall
- 5 企业文化基地
Corporate Culture Education Base
- 6 办公楼前台
Office Building Reception

GLOBAL PRESENCE

全球巡礼

金威刻激光全球售后服务中心 GWEIKE Laser Global After-Sales Service Centers

品质保障 服务护航 Guaranteed Product Quality · Professional Service Support



| 覆盖全球的售后网络服务 |
Global after-sales service network

| 多样化服务打通智造领域 |
Multiple services open up the Intelligent manufacturing field

| 快速响应客户每一个需求 |
Immediate correspondence to each single requirement of customers

P09 **GWK-BL6050**
超快激光玻璃切割机
Ultrafast Laser Glass Cutting Machine

P11 **GKS-0605-GD**
玻璃精密钻孔机
Precision Glass Laser Drilling Machine

P13 **GKS-1210-GD**
玻璃打孔机
Glass Laser Drilling Machine

P15 **GKS-0706-GC**
厚玻璃切裂一体机
Thick Glass Cutting & Splitting Machine

P17 **GSK-0706D-GC**
双平台前切后裂一体机
Dual-Platform Front Cutting & Rear Splitting Integrated Machine

P19 **GKS-0303-G**
激光诱导蚀刻设备
Laser-Induced Etching System

P21 **GKS-4015-LS**
陶瓷切割划线设备
Ceramic Laser Cutting & Scribing Machine

P23 **GWK-UV4065**
双平台精密激光切割机
Dual-Platform Precision Laser Cutting Machine

P25 **GKS-0605D-PI**
卷对片精密激光切割机
Roll-to-Sheet Precision Laser Cutting Machine

P27 **GKS-8575-QN**
铝片激光钻孔设备
Aluminum Sheet Laser Drilling Machine

P29 **DC0605**
PET 膜切机
PET Film Laser Cutting Machine

GWK-BL6050

超快激光玻璃切割机

Ultrafast Laser Glass Cutting Machine



性能优势

超快激光加工：高峰值功率，超短时间内，材料来不及热传导，瞬间破坏材料间分子键，对材料周围损伤小。

Performance advantages

Ultrafast laser processing: With high peak power and ultrashort pulse duration, heat diffusion is effectively suppressed. Molecular bonds are broken instantaneously, resulting in minimal thermal impact on surrounding material.

应用范围

手机和智能穿戴设备（手机前后盖板，摄像头保护镜片、智能手表盖板等）

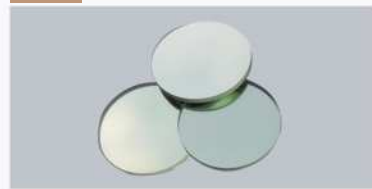
Application field

Applications: Mobile phones and smart wearable devices, including front and rear glass covers, camera protection lenses, and smartwatch cover glass.

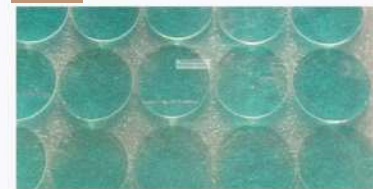
样品 1



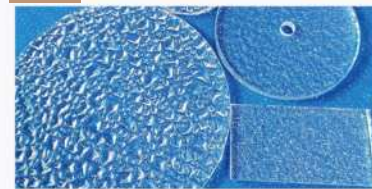
样品 2



样品 3



样品 4



功能特点 Functional specification

A 切割速度快，直线速度可达 500mm/s、曲线速度可达 300mm/s。
High cutting speed: Linear cutting speed up to 500 mm/s, curved cutting speed up to 300 mm/s.

B 双机械手同步自动上下料，设备稼动率高，省人工。
Dual robotic arms with synchronized automatic loading and unloading, significantly improving machine utilization and reducing labor requirements.

C 崩边小，崩边可控制在 10um 以内。
Minimal edge chipping, controlled within 10 μm.

D 光电转换率高，设备稳定寿命长。
High photoelectric conversion rate, and long stable equipment service life.

设备配置

玻璃切割机主体结构包括下机架，大理石平台，直线电机等组成部分。

Equipment configuration

Equipment configuration: The main structure includes a rigid base frame, marble platform, linear motors, and other high-precision motion components.

设备参数 Equipment Parameter

| | | | | | |
|--------|-----------------------|----------------------------------|----------------|---|--------------------------|
| 机型 | Model | GWK-BL6050 | 环境温度 / 湿度 | Ambient temperature/humidity | 22±2°C / 30-60% |
| 激光器波长 | Laser wavelength | 1064nm | 冷却方式 | Cooling method | 水冷 Water cooling |
| 激光器功率 | Laser power | 30-50-70W (可选 Optional) | 最大加工速度 | MAX machining speed | 500mm/s |
| 光束质量 | Beam quality | ≤ 1.3 | 重复定位精度 | Repeat positioning accuracy | ±0.002mm |
| 激光安全等级 | Laser Safety Level | Class IV | 综合加工精度 (金威刻环境) | Overall machining accuracy (under GWEIKE standard operating conditions) | ±0.01mm |
| 切割范围 | Cutting range | 200mm x 200mm (双台面 Double table) | 电力需求 | Electricity demand | AC220V / 20.5A 4.5KW |
| 加工厚度 | Machining thickness | ≤ 1.4mm | 单机尺寸 | Dimension | 1680 x 1560 x 1950mm |
| 最小崩边 | Minimum edge chipping | ≤ 10μm | 重量 | Weight | 约 2.5 吨 Approx. 2,500 kg |

GKS-0605-GD

玻璃精密钻孔机

Precision Glass Laser Drilling Machine

性能优势

- 1、钻孔速度快，精度高，专用吸附夹具平台及抽尘装置，机器自带振镜校正系统；
- 2、可加工圆孔、方孔、腰形孔、三角形孔等各种异形孔；

► Performance advantages

1. High drilling speed and precision, equipped with a dedicated vacuum fixture platform, dust extraction system, and an integrated galvanometer calibration system.
2. Capable of processing round, square, slot-shaped, triangular, and other customized hole geometries.

► 应用范围

盖板玻璃、家用电器、电子玻璃基板、背光玻璃、薄膜太阳能基板等。

► Application field

Cover glass, household appliance glass, electronic glass substrates, backlight glass, and thin-film solar glass substrates.



► 功能特点 Functional specification

本设备使用高能激光束实现玻璃钻孔功能，具有定位精度高，加工过程污染低，孔类型多样化，产品良率高等特点。

The machine utilizes a high-energy laser beam for precision glass drilling, offering high positioning accuracy, a clean process, diverse hole geometries, and a high yield rate.

► 设备配置

大理石运动平台、绿光 / 红外激光器（可选）、飞行光路、振镜扫描头、水冷系统、除尘系统。

► Equipment configuration

Marble motion platform, green or infrared laser (optional), flying optical path, galvanometer scanning head, water-cooling system, and dust extraction system.

► 设备参数 Equipment Parameter

| | | | | |
|--------|---------------------|----------------------------|---|------------------------|
| 机型 | Model | GKS-0605-GD | 环境温度 / 湿度 Ambient temperature/humidity | 22±2°C / 30-60% |
| 激光器波长 | Laser wavelength | 532nm/1064nm (可选 Optional) | 冷却方式 Cooling method | 水冷 Water cooling |
| 激光器功率 | Laser power | 30-120W (可选 Optional) | 振镜扫描速度 Galvanometer scanning speed | 6000mm/s |
| 光束质量 | Beam quality | ≤ 1.3 | 重复定位精度 Repeat positioning accuracy | ±0.002mm |
| 激光安全等级 | Laser Safety level | Class IV | 综合加工精度 (金威刻环境) Overall machining accuracy (under GWEIKE standard operating conditions) | ±0.03mm (≤ 300mm) |
| 切割范围 | Cutting range | 600mm x 500mm (可定制) | 电力需求 Electricity demand | AC220V / 22.5A 5KW |
| 加工厚度 | Machining thickness | ≤ 15mm | 单机尺寸 Dimension | 1890 x 1580x 1900mm |
| 最小崩边 | MIN chipped edge | 60-300μm | 重量 Weight | 约 2 吨 Approx. 2,000 kg |

样品 1



样品 2



样品 3



样品 4



GKS-1210-GD

玻璃打孔机

Glass Laser Drilling Machine



功能特点 Functional specification

激光非接触式加工，对产品无硬力损伤；
Laser non-contact processing, eliminating mechanical stress and preventing damage to the workpiece.

不用水冷却加工，环保无污染；
Dry laser processing without water cooling, environmentally friendly and clean.

没有耗材，支持7*24小时运作，长期使用稳定性好，
No consumables required, supporting 24/7 continuous operation with excellent long-term stability.

加工速度快，效率高，崩边小，耗电低。
High processing speed and efficiency, minimal edge chipping, and low power consumption.

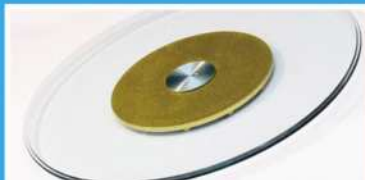
样品 1



样品 2



样品 3



样品 4



设备配置

机架钣金、运动龙门模组、CCD对位机构、面板放置治具、激光系统、人工卸料平台、电控系统、除尘系统等组成。

Equipment configuration

Sheet-metal machine frame, motion gantry module, CCD alignment system, panel positioning fixtures, laser system, manual unloading platform, electrical control system, and dust extraction system.

应用范围

该设备目前已在仪器家居玻璃、光伏玻璃、手机玻璃、医疗仪器、车载显示、面板显示玻璃等行业得到非常广泛的应用。

Applications

Instrument glass, photovoltaic glass, mobile phone glass, medical devices, automotive displays, and flat panel display glass.

设备参数 Equipment Parameter

| | | |
|-----------|-------------------------------|----------------------|
| 机型: | Model: | GKS-1210-GD |
| 激光器波长: | Laser wavelength: | 1064 nm |
| 激光器功率: | Laser power: | 120W |
| 光束质量: | Beam quality: | ≤ 1.3 |
| X/Y/Z轴行程: | Travel of X/Y/Z axis: | 1200/1000/80mm |
| 冷却方式: | Cooling method: | 水冷 (Water cooling) |
| 加工厚度: | Maximum processing thickness: | ≤ 15mm |
| 崩边: | Edge chipping: | ≤ 300μm |
| 环境温度/湿度: | Environmental temperature: | 28±2°C |
| 振镜扫描速度: | Galvanometer scanning speed: | 6000mm/s |
| 重复定位精度: | Repeat positioning accuracy: | ±0.03mm |
| 综合加工精度: | Overall machining accuracy: | ±0.05mm |
| 电力需求: | Electricity demand: | AC220V 22.5A 4KM |
| 单机尺寸: | Dimension of single machine: | 2300*2130*1920mm |
| 重量: | Weight: | 约1吨 Approx. 1,000 kg |

▶ **功能特点** Functional specification

- A** 切割速度快，直线速度可达 500mm/s、曲线速度可达 300mm/s
High cutting speed: Linear cutting speed up to 500 mm/s, curved cutting speed up to 300 mm/s.
- B** 崩边小，崩边可控制在 10um 以内
Minimal edge chipping, controlled within 10 μm.
- C** 切裂一体化完成
Integrated cutting and splitting in one system.
- D** 可实现 12mm 一刀切
Supports single-pass processing for glass thicknesses up to 12 mm.



样品 1



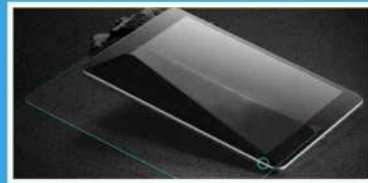
样品 2



样品 3



样品 4



▶ **设备参数** Equipment Parameter

| | | | |
|---------------------------|----------------------------|--|--------------------------|
| 机型 Model | GKS-0706-GC | 环境温度 / 湿度 Ambient temperature/humidity | 22±2°C / 30-60% |
| 激光器波长 Laser wavelength | 切割 1064nm/ 裂片 10.6um CO2 | 冷却方式 Cooling method | 水冷 water-cooling |
| 激光器功率 Laser power | 30-50-70-90W (可选 Optional) | 最大加工速度 MAX machining speed | MAX 500mm/s |
| 光束质量 Beam quality | ≤ 1.3 | 重复定位精度 Repeat positioning accuracy | ±0.002mm |
| 激光安全等级 Laser Safety level | Class IV | 综合加工精度 (金威刻环境) Overall machining accuracy (under GWEIKE standard operating conditions) | ±0.02mm (≤ 300mm) |
| 切割范围 Cutting range | 700x600mm | 电力需求 Electricity demand | AC220V /18A 5KW |
| 加工厚度 Machining thickness | ≤12mm | 单机尺寸 Dimension | 1540X1800X1850mm |
| 最小崩边 MIN chipped edge | ≤ 10μm | 重量 weight | 约 2.5 吨 Approx. 2,500 kg |

GKS-0706-GC

厚玻璃切裂一体机 Thick Glass Cutting & Splitting Machine

▶ **性能优势**

超快激光冷加工：高功率峰值，超短时间内，材料来不及热传导，瞬间破坏材料间分子键，对材料周围损伤小。
高功率 CO2 激光裂片：具有较高的能量转换效率，裂片后产品边缘光滑、无锥度、崩边小。

▶ **Performance advantages**

Ultrafast cold laser processing: With high peak power and ultrashort pulse duration, heat diffusion is effectively suppressed. Molecular bonds are broken instantaneously, resulting in minimal thermal impact on surrounding material.
High-power CO2 laser splitting: High energy conversion efficiency delivers smooth, taper-free edges with minimal edge chipping after splitting.

▶ **设备配置**

切裂一体机主体结构包括下机架，大理石平台，直线电机，除尘柜等组成部分。

▶ **Equipment configuration**

Base frame, marble platform, linear motors, dust extraction cabinet, and other precision components.

▶ **应用范围**

安防行业（摄像机盖板、摄像头保护镜片、显示器盖板等），智能家居（插座玻璃盖板、显示屏盖板等），工控玻璃盖板外形切割。

▶ **Applications**

Security (camera cover glass, camera protection lenses, display cover glass), smart home (socket cover glass, display cover glass), and industrial control glass cover profile cutting.



应用范围

安防行业（摄像机盖板、摄像头保护镜片、显示器盖板等），智能家居（插座玻璃盖板、显示屏盖板等），工控玻璃盖板外形切割。

Application field

Security industry (camera cover, camera protective lens, display cover, etc.), smart home (socket glass cover, display cover, etc.), industrial control glass cover shape cutting.

功能特点 Functional specification

A 切割速度快，直线速度可达 500mm/s、曲线速度可达 300mm/s
Fast cutting speed, linear speed up to 500mm / s, curve speed up to 300mm / s.

B 崩边小，崩边可控制在 10um 以内
The edge collapse is small and can be controlled within 10um.

C 切裂一体化完成
Cutting and splitting are integrated in one system.

D 可实现 12mm 一刀切
Supports single-pass cutting up to 12 mm thick glass.



设备参数 Equipment Parameter

| | | | |
|----------------------------|---|---|---------------------------|
| 机型 Model | GSK-0706D-GC | 环境温度 / 湿度 Ambient temperature/humidity | 22±2°C / 30-60% |
| 激光器波长 Laser wavelength | 切割 1064nm / 裂片 10.6 μm (CO2) | 冷却方式 Cooling method | 水冷 Water cooling |
| 激光器功率 Laser power | 切割 30-50-70-90W (可选 Optional) / 裂片 120W | 最大加工速度 MAX machining speed | MAX 500mm/s |
| 光束质量 Beam quality | ≤ 1.3 | 重复定位精度 Repeat positioning accuracy | ±0.002mm |
| 激光安全等级 Laser Safety level | Class IV | 综合加工精度 (金威刻环境) Overall machining accuracy (under GWEIKE standard operating conditions) | ±0.02mm (≤ 300mm) |
| 切割范围 Cutting range | 700mm x 600mm (双台面) | 电力需求 Electricity demand | AC220V / 18A 5KW |
| 加工厚度 Machining thickness | ≤12mm | 单机尺寸 Dimension | 2200 x 2360x 1890mm |
| 最小崩边 Minimum edge chipping | ≤ 10μm | 重量 Weight | 约 4.5 吨: Approx. 4,500 kg |



GSK-0706D-GC

双平台前切后裂一体机

Double platform front cutting and back splitting machine

性能优势

超快激光冷加工：高峰值功率，超短时间内，材料来不及热传导，瞬间破坏材料间分子键，对材料周围损伤小。
高功率 CO2 激光裂片：具有较高的能量转换效率，裂片后产品边缘光滑、无锥度、崩边小。
双工位前切后裂片，切割裂片互不影响，工作效率高。

Performance advantages

Ultrafast cold laser processing: With high peak power and ultrashort pulse duration, heat diffusion is effectively suppressed, resulting in minimal thermal impact on surrounding material.
High-power CO2 laser splitting: High energy conversion efficiency delivers smooth, taper-free edges with minimal edge chipping.
Dual-station front cutting and rear splitting, with cutting and splitting processes operating independently to maximize throughput.

设备配置

切裂一体机主体结构包括下机架，大理石平台，直线电机，除尘柜等组成部分。

Equipment configuration

Base frame, marble platform, linear motors, dust extraction cabinet, and other precision components.

样品 1



样品 2



样品 3



样品 4



GKS-0303-G

激光诱导蚀刻设备

Laser Induced Etching System



设备配置

钣金机架、大理石运动平台、激光器、切割头、激光加工系统、真空吸附系统等

Equipment configuration

Sheet-metal machine frame, marble motion platform, ultrafast laser source, processing head, laser processing system, and vacuum chuck system.

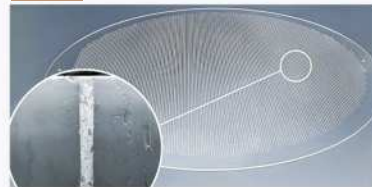
应用范围

玻璃基板先进封装, 航天通信, 微流控与生物芯片, 电子显示等。

Applications

Advanced glass substrate packaging, aerospace and optical communications, microfluidics and biochips, and electronic display technologies.

样品 1



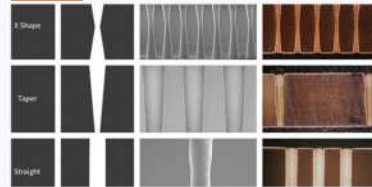
样品 2



样品 3



样品 4



功能特点 Functional specification

- A** 可加工石英、硼硅、钠钙等不同材质的玻璃。
Capable of processing various glass materials, including quartz, borosilicate glass, and soda-lime glass.
- B** 打孔间距均匀, 最小孔径 $\leq 5\mu\text{m}$, 最大深径比可达 100:1。
Uniform hole spacing, with a minimum feature size $\leq 5\mu\text{m}$ and a maximum aspect ratio of up to 100:1.
- C** 孔径圆度良好, 孔壁光滑、无微裂痕。
Excellent hole roundness, smooth sidewalls, and no micro-cracks.
- D** 设备产能 $\geq 5000\text{points/s}$ 。
Processing capacity: $\geq 5,000$ features per second

性能优势

玻璃切割机主体结构包括下机架, 大理石平台, 直线电机等组成部分; 应用超快皮秒/飞秒激光器, 可实现不同厚度玻璃的蚀刻诱导孔及异形诱导图形的加工; 智能 CCD 视觉定位系统, 加工精度高, 速度快, 孔圆度高, 锥度 径比大;

Performance advantages

The main structure of the glass cutting machine includes components such as the lower frame, marble platform, and linear motor. Utilizing ultrafast picosecond/femtosecond lasers, the system enables laser-induced etching of micro-holes and complex micro-patterns in glass substrates of varying thicknesses. An intelligent CCD vision positioning system ensures high processing accuracy, high speed, excellent roundness, minimal taper, and a large achievable aspect ratio.

设备参数 Equipment Parameter

| | | | | |
|--------|----------------------|------------------------|--|-------------------------------|
| 机型 | Model | GKS-0303-G | 加工速度 Processing speed | 5000points/s |
| 激光器波长 | Laser wavelength | 1064nm | 重复定位精度 Repeat positioning accuracy | $\pm 0.001\text{mm}$ |
| 激光器功率 | Laser power | 50W(可选) | 综合加工精度 Comprehensive processing accuracy | $\pm 0.02\text{mm}$ |
| 激光安全等级 | Laser safety class | Class IV | 环境温度/湿度 Environmental temperature/humidity | 22 \pm 2 $^{\circ}\text{C}$ |
| 加工范围 | Processing range | 300x300mm(可定制) | 电力需求 Power requirement | AC220V 18A 5KW |
| 加工厚度 | Processing thickness | $\leq 5\text{mm}$ | 单机尺寸 Single machine size | 1500x1450x1800mm |
| 重量 | Weight | 约 2 吨 Approx. 2,000 kg | | |

GKS-4015-LS

陶瓷切割划线设备

Ceramic Cutting and Scribing Equipment



应用范围

消费电子、通信设备、汽车电子、航天航空等行业，陶瓷基（氧化铝、氮化铝、氧化锆等）电路板的激光切割、划线和打孔；

Application field

Laser cutting, scribing, and drilling of ceramic-substrate circuit boards (alumina, aluminum nitride, zirconia, etc.) for industries including consumer electronics, communication equipment, automotive electronics, aerospace, and more.

设备配置

钣金机架、大理石运动平台、激光器、切割头、激光加工系统、除尘系统，上下料输送等部分组成。

Equipment configuration

The system consists of a sheet-metal frame, marble motion platform, laser source, cutting head, laser processing system, dust extraction system, and automatic loading/unloading conveyor modules.

功能特点 Functional specification

A 激光非接触加工，避免机械应力导致材料崩边；
Non-contact laser processing helps prevent edge chipping caused by mechanical stress.

B 光纤激光器，光路结构简洁、稳定、寿命长。
Fiber laser source with a simple, stable optical path and long service life.

C 热影响区小，边缘无熔化、发黑，断面平整无锥度；
The heat-affected zone (HAZ) is small; no edge melting or blackening; smooth kerf surface with no taper.

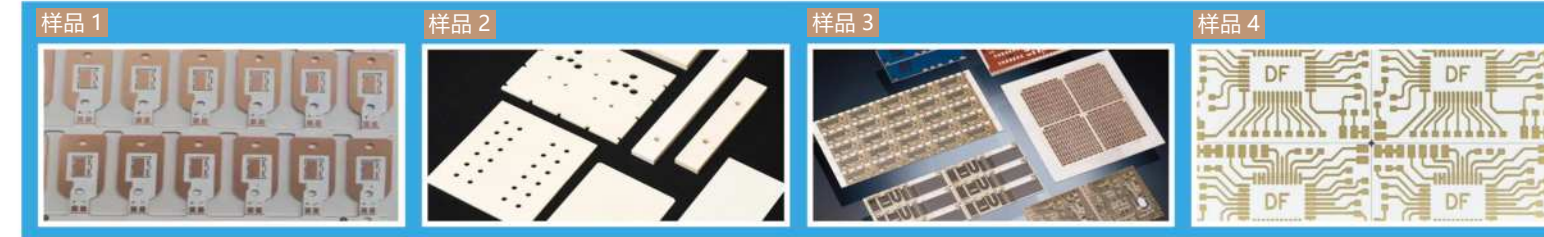
D CCD 视觉系统自动定位，减少人工校准，定位精度高；
CCD vision system for automatic positioning, reducing manual calibration and improving positioning accuracy.

性能优势

1. 切割精度高，可达 $30\mu\text{m}$ ；
2. 切割良品率高，不发黑不发黄，无毛刺；
3. 双工位配置，自动视觉定位，自动上下料系统，生产效率高；
4. 兼容氧化铝、氮化铝、氧化锆、蓝宝石、硅片等多种硬脆性材料的切割、钻孔、划线与蚀蚀加工；

Performance advantages

1. High cutting accuracy, up to $30\mu\text{m}$.
2. High yield rate: no blackening or yellowing, and no burrs.
3. Dual-station configuration with automatic vision alignment and automatic loading/unloading, delivering high production efficiency.
4. Compatible with cutting, drilling, scribing, and etching of various hard and brittle materials, including alumina, aluminum nitride, zirconia, sapphire, and silicon wafers.



设备参数 Equipment Parameter

| | | | | | |
|-----------|-----------------------------|-----------------------|---------|----------------------------------|----------------------------|
| 机型 | Model | GKS-4015-LS(陶瓷切割划线设备) | 综合加工精度 | Comprehensive Machining Accuracy | $\pm 0.02\text{mm}$ |
| 激光器波长 | Laser wavelength | 1064nm | 切割线宽 | Cutting - line Width | 25-100 μm |
| 激光器最大平均功率 | Maximum average laser power | 150/200/300/500W 可选 | 电力需求 | Electricity Demand | AC 220 V, 50 Hz, 4 kW |
| 加工范围 | Processing Scope | 600x400mm (可调) | 外形尺寸 | Overall dimension | 1800x1650x1900 mm |
| 加工厚度 | Processing Thickness | $\leq 2\text{mm}$ | 设备重量 | Equipment Weight | 约 2 吨 (Approx. 2,500 kg) |
| 加工速度 | Processing Speed | 500-6000 mm/s | 环境温度、湿度 | Ambient temperature and humidity | 28 $\pm 2^{\circ}\text{C}$ |
| 重复定位精度 | Repeat positioning accuracy | $\pm 0.002\text{mm}$ | 设备气源 | Equipment air source | 0.3-0.6MPa |

GWK-UV4065

双平台精密激光切割机

Dual-platform Precision Laser Cutting Machine

性能优势

柔性便捷的加工方式，可高速加工任意形状；
双台面设计，有独立的操作台，节约上下料时间，效率高
达单台面的 1.2-1.5 倍。

Performance advantages

Flexible and efficient processing enables high-speed machining of complex shapes.
Dual-table design with independent workstations reduces loading/unloading time, delivering 1.2-1.5X the throughput of a single-table setup.

应用范围

FPC 外形、软硬结合板开盖、PCB 分板、及摄像头模组切割，满足不同厚度或不同材料的快速切割。

Application field

FPC profile cutting, cover opening for rigid-flex boards, PCB depaneling, and camera module cutting—supporting high-speed processing across different thicknesses and materials.

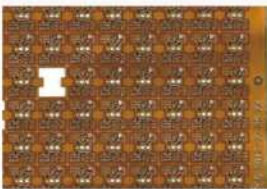
样品 1



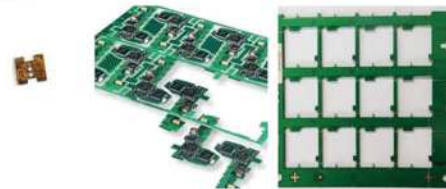
样品 2



样品 3



样品 4



设备配置

皮秒激光器、高速振镜系统、CCD 定位系统、大理石平台 + 直线电机、高功率风机、吸附模组。

Equipment configuration

Picosecond laser, high-speed galvanometer (galvo) scanning system, CCD positioning system, marble platform with linear motor drive, high-power blower, and vacuum suction module.



功能特点 Functional specification

冷加工，无明显碳化现象

Cold processing with no visible carbonization.

热冲击小，低成型不合格率

Low thermal shock and low forming defect rate.

加工过程不接触，无形变

Non-contact processing with no deformation.

精度高，切割无毛刺

High precision with burr-free cutting.

平台无需夹具可定位

Workpiece positioning without fixtures/clamps.

高精度图像定位系统

High-precision image positioning system

直线电机平台精度高，维护成本低

High-accuracy linear-motor stage with low maintenance cost.

自动调节工作台高度，满足焦距问题

Automatic table height adjustment to maintain the correct focal distance.

设备参数 Equipment Parameter

| | | | |
|---------------------------|----------------------------------|---|----------------------|
| 机型 Model | GWK-UV4065 | 环境温度 / 湿度 Ambient temperature/humidity | 22±2°C / 30-60% |
| 激光器波长 Laser wavelength | 355nm/532nm (可选 Optional) | 冷却方式 Cooling method | 水冷 water-cooling |
| 激光器功率 Laser power | 15W/20W/30W (可选 Optional) | 振镜扫描速度 The amplitude mirror scan speed | MAX 6000mm/s |
| 光束质量 Beam quality | ≤ 1.3 | 重复定位精度 Repeat positioning accuracy | ±0.002mm |
| 激光安全等级 Laser Safety level | Class IV | 综合加工精度 (金威刻环境) Overall machining accuracy (under GWEIKE standard operating conditions) | ±0.03mm (≤ 300mm) |
| 切割范围 Cutting range | 400mm x 650mm (双台面 Double table) | 电力需求 Electricity demand | AC220V /18A 5KW |
| 加工厚度 Machining thickness | ≤ 2mm | 单机尺寸 Dimension | 1650 x 1800 x 1950mm |
| 重量 Weight | 约 2.5 吨: Approx. 2,500 kg | | |

GKS-0605D-PI

卷对片精密激光切割机

Roll-to-Sheet Precision Laser Cutting Machine

性能优势

1. 高性能皮秒激光器，激光光束质量好，聚焦光斑小，功率分布均匀，热效应小，切缝宽度小且光滑，可以一定程度避免积碳；
2. 高速振镜 + 远心场镜，极低温度漂移，稳定光斑轨迹控制，实现高速、高精度切割
3. 智能分光装置，一台激光器分两束光，双头双加工平台，同步运行，加工效率翻倍，保养成本更低。

Performance advantages

1. High-performance picosecond laser source featuring excellent beam quality, a small focused spot, uniform power distribution, and minimal thermal effect. It produces narrow, smooth kerfs and effectively reduces carbonization.
2. High-speed galvanometer combined with a telecentric F-theta lens, delivering extremely low thermal drift and stable beam trajectory control for high-speed, high-precision cutting.
3. Intelligent beam-splitting system: A single laser source is divided into two beams, enabling dual heads and dual processing platforms to operate synchronously, doubling productivity while reducing maintenance costs.

设备配置

皮秒激光器、振镜系统、CCD 定位系统、大理石平台、直线电机、高功率风机、真空吸附平台、自动放卷机构。

Equipment configuration

Picosecond laser source, galvanometer scanning system, CCD vision positioning system, marble motion platform, linear motors, high-power blower, vacuum chuck platform, and automatic unwinding mechanism.



样品 1



样品 2



功能特点 Functional specification.

- A** 采用高精度直线电机平台，速度快，精度高，磨损低，维护成本低；
High-precision linear motor motion platform, offering high speed, high accuracy, low mechanical wear, and reduced maintenance costs.
- B** 高精度大理石底座 + 飞行光路 + 双工位加工平台 + 卷对片；
High-precision marble base, flying optical path, dual-station processing platforms, and roll-to-sheet material handling.
- C** 对多种材料且不同厚度组合的复合工件可以一次切割完成；
Composite workpieces consisting of multiple materials and varying thicknesses can be processed in a single cutting operation.
- D** Z 轴自动调节高度，满足多种激光焦距的问题；
Automatic Z-axis height adjustment, accommodating different laser focal lengths.
- E** CCD 视觉定位系统，满足高精度需求；
CCD visual positioning system to meet high-precision requirements.
- F** 可以一次性加工任意复杂图形，大大缩短交货周期，提高生产效率；
Capable of processing complex patterns in a single pass, significantly shortening lead times and improving overall production efficiency.

应用范围

PCB、覆盖膜 (CVL)、柔性板 (FPC)、软硬结合板等行业；
FPC 软板、覆盖膜、PET 膜、PI 膜、PP 膜、胶膜、防爆膜、电磁膜、FR4、3M 胶、PI 补强、PE 膜等各类薄膜及辅料切割。

Application field

PCB, coverlay film (CVL), flexible printed circuits (FPC), and rigid-flex PCB manufacturing.
FPC substrates, coverlay films, PET films, PI films, PP films, adhesive films, protective films, EMI shielding films, FR4, 3M adhesive tapes, PI stiffeners, PE films, and other functional films and auxiliary materials.

设备参数 Equipment Parameter

| | | | |
|--|---|---|---|
| 机型 Model | GKS-0605D-PI | 电源及功率 Power supply and power | 主机 (host) AC380 50Hz/5kW |
| 激光波长 Laser wavelength | 532nm/355nm | 设备尺寸、重量 Equipment size and weight | 1600x1750x2000mm 约 2.5 吨 Approx. 2,500 kg |
| 激光输出功率 Laser output power | 30W/50W/60W/80W(可选配 Optional) | 环境温度、湿度 Environmental temperature and humidity | 23(±3°C) / ≤ 60%RH |
| 机床机构 Machine tool structure | 大理石 X、Y、Z 运动平台 marble X, Y, Z motion platform | 平台定位精度 Platform positioning accuracy | ±0.005mm |
| 激光重复频率 Laser repetition rate | 500kHz-1000kHz | 平台重复定位精度 Platform repeated positioning accuracy | ±0.002mm |
| 冷却方式 Cooling Mode | 水冷 water cooling | 综合加工精度 (金威刻环境) Overall machining accuracy (under GWEIKE standard operating conditions) | ±0.03mm |
| XYZ 轴最大运行速度 Maximum running speed of XYZ axis | X: 500mm/s; Y: 500mm/s; Z: 10mm/s; | 激光振镜扫描范围 Scanning range of laser galvanometer | 45x45mm |
| XYZ 轴行程 XYZ axis travel | X: 600mm; Y: 500mm; Z: 50mm | 最大加工幅面 Maximum processing format | 600x300mm(可定制 can be customized) |

GKS-8575-QN

铝片精密激光钻孔机

Precision Laser Drilling Machine for Aluminum Sheets



设备配置

铝片激光钻孔设备主体结构包括钣金机架、大理石运动平台、光纤激光光路系统、激光切割控制系统、风机吸附系统等组成部分。

Equipment configuration

The main structure includes a sheet-metal machine frame, marble motion platform, fiber laser optical system, laser processing control system, and a vacuum suction system.

功能特点 Functional specification

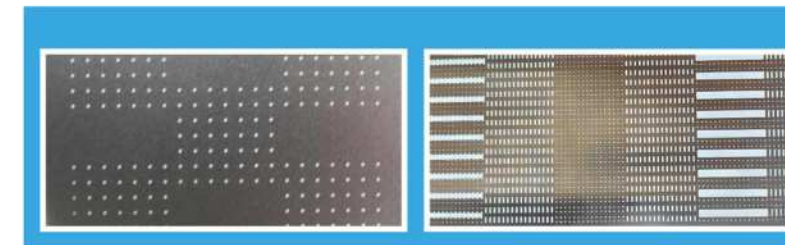
- A** 激光加工控制系统，功能丰富、操作简便。
Advanced laser processing control system featuring comprehensive functions and user-friendly operation.
- B** 直线电机驱动，速度快，加精度高。
Linear motor drive system delivering high speed and high processing accuracy.
- C** 光纤激光器，光路结构简洁、稳定、寿命长。
Fiber laser with a concise, stable optical path structure and long service life.
- D** 大理石运动平台结构，设备长期运行稳定可靠。
Marble motion platform structure ensures stable and reliable long-term operation of the equipment.
- E** 自动化、智能化的 CCD 视觉定位系统，定位精度高。
Automated and intelligent CCD vision positioning system with high positioning accuracy.

性能优势

1. 采用大理石底座，搭配高精度直线电机，实现高精度定位精度和重复精度，确保在快速加工的同时保证产品的精度；
2. 采用专业真空吸附平台治具结构设计，大大提升吸附能力与切割质量，平台无需任何夹具即可定位；
3. 采用高精度光学系统进行激光加工，精度高，同时加工过程中不会产生接触，不会产生任何机械应力与变形；
4. 可以加工多种孔径大小的孔，提高生产效率；

Performance advantages

- 1.A marble base combined with high-precision linear motors delivers excellent positioning and repeatability accuracy, ensuring product precision even during high-speed processing.
- 2.A professional vacuum chuck platform significantly enhances holding force and processing quality, enabling precise positioning without additional mechanical fixtures.
- 3.High-precision optical systems enable non-contact laser processing, eliminating mechanical stress and material deformation.
- 4.Capable of processing holes with multiple diameters, improving overall production efficiency.



应用范围

铝基板、铜基板的激光钻孔与切割；

Application field

Laser drilling and cutting of aluminum-based boards and copper-based boards.

设备参数 Equipment Parameter

| | | | | | |
|-----------|-------------------------------------|----------------------|---------|----------------------------------|------------------------|
| 机型 | Model | GKS-8575-QN(光纤切割机) | 重复定位精度 | Repeat positioning accuracy | ±2μm |
| 激光器波长 | Laser wavelength | 1064nm | 通孔最小孔径 | Minimum through-hole diameter | 0.5mm 与材料厚度有关 |
| 激光器最大平均功率 | Maximum average laser power | 200W | 电源与功率 | Power supply and power | AC220V/50HZ/4KW |
| 冷却方式 | Cooling method | 水冷 Water cooling | 设备重量 | Equipment weight | 约 2 吨 Approx. 2,000 kg |
| 加工范围 | Processing range | 850x750mm(可定制) | 外形尺寸 | Overall dimension | 1800x1550x1900mm |
| 加工铝板厚度 | Processing aluminum plate thickness | ≤1mm | 环境温度、湿度 | Ambient temperature and humidity | 28±2°C |
| 综合加工精度 | Comprehensive processing accuracy | ≤40μm | 设备气源 | Equipment air source | 0.3-0.6Mpa |

DC0605

PET 膜切机 PET Film Laser Cutting Machine

性能优势

切割精度高、CCD 自动定位、大理石基座
稳定性高、切割材料表面干净、维护简单。

Performance advantages

High cutting accuracy, automatic CCD vision positioning, a high-stability marble base, clean cutting edges, and easy maintenance.

应用范围

主要用于非金属薄膜材料的高精度切割，如 gdf 膜、偏光片、触摸屏 PET、OCA、电子纸、手写板等。

Applications

High-precision cutting of non-metallic thin film materials, including GDF films, polarizer films, PET films for touchscreens, OCA, electronic paper, and handwriting tablet materials.

样品 1



样品 2



设备配置

设备主要机构有激光器、反射镜、聚焦镜、反射镜架、反射镜细牙调节螺丝、螺杆机 X、Y 轴模块驱动器、触摸屏、XY 轴拖链及固定座、大理石结构件、传感器、气压表、辅气调压阀、散热风扇、机身。

Equipment configuration

Laser source, reflector and focusing optics, precision mirror mounts with fine adjustment, X/Y-axis motion modules, touchscreen control interface, drag chain assemblies, marble structural components, sensors, air pressure gauge, assist-gas regulator, cooling fans, and machine enclosure.



功能特点 Functional specification.

- A** 龙门双伺服驱动结构
Gantry structure with dual servo drive system
- B** 自主研发激光切割软件
In-house developed laser cutting software
- C** 进口激光器及光学器件，维护成本低
Imported laser sources and optical components, ensuring low maintenance costs.
- D** 专用排烟系统，优质切割效果
Dedicated fume extraction system for clean and high-quality cutting results.
- E** 加强型焊接机床和横梁，高动态刚性机床系统
Reinforced welded machine frame and beam, forming a high dynamic rigidity machine system.

设备参数 Equipment Parameter

| | | | |
|---------------------------|---------------------------------|---|------------------|
| 机型 Model | DC0605-PET | 环境温度 / 湿度 Ambient temperature/humidity | 22±2°C / 30-60% |
| 激光器类型 Laser type | CO2 Sealed RF Laser(密封式 Sealed) | 冷却方式 Cooling method | 水冷 water-cooling |
| 激光器 Laser | C55 (Optional) | 最大加工速度 MAX machining speed | 300mm/s |
| 激光安全等级 Laser Safety level | Class IV | 重复定位精度 Repeat positioning accuracy | ±0.01mm |
| 切割范围 Cutting range | 500mm x 600mm | 综合加工精度 (金威刻环境) Overall machining accuracy (under GWEIKE standard operating conditions) | ±0.05mm |
| 加工厚度 Machining thickness | ≤ 1mm | 电力需求 Electricity demand | AC220V/14.5A 3KW |
| 单机尺寸 Dimension | 1350 x 1300 x 1600mm | | |





SERVICE POLICY 服务政策

▶ 售前服务 Pre-sales service

通过网络、电话、上门等多种方式，为客户提供专业的行业解决方案。
We provide professional industry solutions through multiple channels, including online consultation, telephone support, and on-site visits.

▶ 售中服务 In-Sales Service

我们将以诚信、公平的原则对待每一位客户。
We adhere to the principles of integrity and fairness in every stage of cooperation with our customers.

▶ 售后服务 After-Sales Service

我们将对您采购的设备负责，提供上门安装、调试、培训等技术支持。
We take full responsibility for the equipment you purchase and provide comprehensive after-sales support, including on-site installation, commissioning, and operator training.

G·WEIKE
金威刻激光

G·WEIKE
金威刻激光

以智为擎 · 以质为基 ◀

<<< 赋能智造加速

Powered by Intelligence. Built on Quality.

<<< Empowering the acceleration of intelligent manufacturing.